



WOMEN'S DIVISION

Northern Collegiate Hockey Association

Established 1980 | www.nchahockey.org

Hockey Communications * 651-442-8921 * brianwmonahan@yahoo.com

Brian Monahan * 1147 Cherokee Avenue Saint Paul, Minnesota 55118

| | | | | | | | | | | | |
|--------|-----------|-----------|-------------|--------|-------------|-----------------|-----------------|------------------|--------------------|------------|---------------|
| ADRIAN | CONCORDIA | FINLANDIA | LAKE FOREST | MARIAN | ST. NORBERT | ST. SCHOLASTICA | UW - EAU CLAIRE | UW - RIVER FALLS | UW - STEVENS POINT | UW - STOUT | UW - SUPERIOR |
|--------|-----------|-----------|-------------|--------|-------------|-----------------|-----------------|------------------|--------------------|------------|---------------|

2009-10 Women's Standings

| | W | L | T | PTS |
|----------------------------------|----|----|---|-----|
| Adrian (12-9-2) | 10 | 3 | 1 | 21 |
| 7 Lake Forest (15-2-2) | 9 | 1 | 2 | 20 |
| 6 UW-River Falls (13-3-4) | 7 | 2 | 3 | 17 |
| UW-Stevens Point (11-7-2) | 6 | 4 | 2 | 14 |
| UW-Superior (11-7-2) | 5 | 5 | 2 | 12 |
| UW-Eau Claire (10-8-3) | 5 | 5 | 2 | 12 |
| Concordia-Wis. (9-11-3) | 5 | 7 | 2 | 12 |
| Finlandia (5-16) | 1 | 11 | 0 | 2 |
| Marian (2-17) | 1 | 11 | 0 | 2 |

Number indicates uscho.com national ranking

SCOREBOARD

Fri, Feb 5

| | | | |
|------------------|---|-----------------------|----------|
| UW-Stevens Point | 2 | UW-Eau Claire | 4 |
| Concordia-Wis. | 1 | UW-River Falls | 4 |

Sat, Feb 6

| | | | |
|-------------------------|----------|-----------------------|----------|
| Concordia-Wis. | 1 | UW-River Falls | 4 |
| UW-Superior | 2 | Finlandia | 0 |
| Marian | 1 | Adrian | 6 |
| UW-Stevens Point | 6 | UW-Eau Claire | 2 |

Sun, Feb 7

| | | | |
|--------------------|----------|---------------|----------|
| UW-Superior | 3 | Finlandia | 0 |
| Marian | 0 | Adrian | 3 |

NCHA HISTORY: JACKIE SLAATS

Lake Forest Athletic Director Jackie Slaats was the chief organizer during the formation of the NCHA Women's Division in 2000. Her leadership in this role over 6-months in 1999-2000 was a key component.

The NCHA is celebrating 10 years of women's hockey

Feb 1 USCHO.COM NATIONAL POLL

| | Team | Record | Prev |
|----------|-----------------------|---------------|----------|
| 1 | Plattsburgh | 17-1-1 | 1 |
| 2 | Amherst | 15-2-4 | 2 |
| 3 | Elmira | 16-4-1 | 3 |
| 4 | RIT | 13-4-3 | 4 |
| 5 | Trinity | 15-3-2 | 6 |
| 6 | UW-River Falls | 13-3-4 | 7 |
| 7 | Lake Forest | 15-2-2 | 9 |
| 7 | Middlebury | 13-5-1 | 5 |
| 9 | Manhattanville | 15-4-1 | 8 |
| 10 | Gustavus | 12-4-2 | 10 |

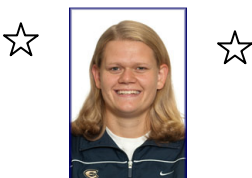
UWEC's Faber Takes Weekly Award

SAINT PAUL, MINN. (February 9, 2010) – Kristin Faber (Austin, Minn. / Austin, MSHSL) has been named NCHA women's player of the week for her four-point weekend in a split with UW-Stevens Point.

Faber was involved in all four Blugold goals in a 4-2 victory last Friday night in Eau Claire. She assisted on a first period goal and two second period goals as UWEC built a 3-0 lead. But UW-Stevens Point came roaring back, cutting the lead to 3-2 after 40:00. Then, as the Pointers were pushing to gain the equalizer, Faber made it a two-goal cushion by burying her 19th of the season at 14:28 of the third. UW-Eau Claire won the game 4-2.

On the season, Faber is second in the NCHA in total points with 33 - two behind Lake Forest's Kim Herring. Her four-point game against UW-Stevens Point was the fourth time this season she has posted four points in a game and her ninth multi-point game of the year.

NOTES: **Erin Marvin** of UW-Stevens Point had three goals and an assist in a split with UW-Eau Claire ... **Brooke Zaleski** has eight points in her last six games for Adrian ... **Kaytlin Ruzicka** of Marian has made 140 saves in her past three games, giving up nine goals ... **Lake Forest** controls its own destiny for winning the conference championship with four games to play ... **UW-River Falls** visits Lake Forest this weekend ranked #6 and having lost once in its past 11 games ... **UW-Superior** has held its opponent to two goals or less in 19 of 20 games this season.



*Kristin Faber
Jr, F, UW-Eau Claire
Austin, MN
Fri: Goal, 3 assists in 4-2 win over UWSP*



*Erin Marvin
So, F, UW-Stevens Point
Shoreview, MN
Fri: 2 goals in 4-2 loss
Sat: Goal, assist in 6-2 win*



*Brooke Zaleski
So, F, Adrian
Toledo, OH
Sat: G, A, in 6-1 win
Sun: G, A in 3-0 win*

Upcoming Games - Full schedules inside, all times local

| | Visitor | Home | Start Time |
|------------|------------------|------------------|------------|
| Tue Feb 9 | UW-Stevens Point | Gustavus | 7:00p |
| Tue Feb 9 | UW-River Falls | Bethel | 7:00p |
| Tue Feb 9 | St. Thomas | UW-Superior | 7:00p |
| Fri Feb 12 | UW-River Falls | Lake Forest | 7:00p |
| Fri Feb 12 | Finlandia | UW-Eau Claire | 7:00p |
| Fri Feb 12 | UW-Superior | Marian | 8:00p |
| Sat Feb 13 | UW-Superior | Marian | 12:00p |
| Sat Feb 13 | Finlandia | UW-Eau Claire | 2:00p |
| Sat Feb 13 | UW-River Falls | Lake Forest | 2:00p |
| Sat Feb 13 | Adrian | UW-Stevens Point | 7:00p |
| Sun Feb 14 | Adrian | UW-Stevens Point | 2:30p |

CONCORDIA UNIVERSITY WISCONSIN, coached by Jim Ingman, 3rd season

| | | | | | |
|-----------------|-------------|-----------------------------|--------------------|----------------|------------|
| Overall: 9-11-3 | NCHA: 5-7-2 | Home: 6-2-2 | Road: 3-8-1 | Neutral: 0-1-0 | OT: 0-2-3 |
| Oct: 1-0-0 | Nov: 2-3-0 | Dec: 1-2-1 | Jan: 5-4-2 | Feb: 0-2-0 | Mar: 0-0-0 |
| vs. MIAC: 2-4-1 | 1-goal: 3-4 | Before holiday break: 4-5-1 | After break: 5-6-2 | | |

Last week: Lost 4-1 at 7 UWRF
G: Athens

Current Streak: Lost 2 Last 4 games: 2-2-0 Last 8 games: 4-3-1

Upcoming Games: Feb 19-20 at LFC

| | | |
|-------------------------------|--------------------------------|-----------------------------|
| When scoring first: 5-2-2 | When out shooting opp: 9-2-2 | When being out shot: 0-9-1 |
| When leading after two: 6-1-2 | When trailing after two: 1-8-1 | When tied after two: 2-2-0 |
| When scoring 3+ goals: 7-1-1 | Opp scores 2 or less: 8-1-2 | vs. ranked opponents: 0-2-0 |

* Jan 16 vs FIN: First shutout in school history, recorded by Lea Jondal (CUW's 68th game)

* Dec 11-12 vs UWS: 1st games CUW did not win when holding opponent to 2 goals or less (previously 4-0)

* Sarah Luberda: 6-point weekend Oct 31 - Nov 1 at Buffalo State (4-2-6)

* Eliminated from O'Brien Cup playoffs in first round last season, losing 4-1 to UW-Stevens Point

* Earned first playoff berth in team history in 08-09 (2nd season)

* 1st win in team history (2 seasons) Nov 7, 2008 vs. St. Olaf 7-5 ... GW goal by Alisha Java ... Winning goalie – Kari Hunter

* Opens with 6-straight road games and finishes with 4-straight road games

For more info, visit <http://athletics.cuw.edu/sports/whockey/index.cfm>

Concordia-Wisconsin 2009-10
(9-11-3, 5-7-2)

| | | |
|----------------------|------------------|----------|
| Oct 31 | at Buffalo State | W, 4-1 |
| Nov 1 | at Buffalo State | W, 6-2 |
| Nov 6 | at St. Benedict | W, 2-1 |
| Nov 7 | at St. Catherine | L, 3-4ot |
| Nov 20 | at UWSP | L, 1-4 |
| Nov 21 | at UWSP | L, 2-4 |
| Dec 4 | vs. UWEC | W, 3-2 |
| Dec 5 | vs. UWEC | L, 2-3 |
| Dec 11 | vs. UWS | L, 1-2 |
| Dec 12 | vs. UWS | T, 1-1ot |
| Jan 2 | vs. Hamline | T, 3-3ot |
| Jan 3 | vs. Hamline | W, 7-4 |
| Jan 8 | at CC-M'head | L, 2-3ot |
| Jan 9 | at CC-M'head | L, 1-4 |
| Jan 10 | at St. Olaf | L, 2-8 |
| Jan 15 | vs. FIN | W, 2-1 |
| Jan 16 | vs. FIN | W, 5-0 |
| Jan 22 | at ADRIAN | L, 2-5 |
| Jan 23 | at ADRIAN | T, 2-2ot |
| Jan 28 | vs. MARIAN | W, 3-0 |
| Jan 30 | vs. MARIAN | W, 7-0 |
| Feb 5 | at 7 UWRF | L, 1-4 |
| Feb 6 | at 7 UWRF | L, 1-4 |
| Feb 19 | at LFC | 7:00p |
| Feb 20 | at LFC | 2:00p |
| All times local | | |
| Jim Ingman (15-50-9) | | |

GAME-BY-GAME

F 6 at UWRF: The Falcons built a 4-0 lead through 2 periods to win 4-1; Jaime Athens scored for CUW
 F 5 at UWRF: Lea Jondal made 40 saves and Jaime Athens scored the lone goal as CUW fell 4-1
 J 30 vs. MARIAN: Jaime Athens scored two short-handed goals and CUW put 60 shots on goal in a 7-0 win
 J 28 vs. MARIAN: Alyssa Isaackson, Sarah Cole and Sarah Lichtie scored for CUW in a 3-0 shutout of MARIAN
 J 23 at ADRIAN: Hilary Christiansen and Jamie Athens scored 3rd period goals in a comeback tie 2-2 at ADRIAN
 J 22 at ADRIAN: Tied at 2 after 2 periods, ADRIAN pulled away with 3 goals in the 3rd to win 5-2
 J 16 vs. FIN: Lea Jondal made 19 saves and 5 different Falcons scored goals in a 5-0 win
 J 15 vs. FIN: Alex Barton scored on the power play at 10:12 of the 3rd to lift CUW to a 2-1 victory
 J 10 at St. Olaf: CUW got goals from Sam Meuwissen and Jamie Athens, but the Olies won 8-2
 J 9 at CC-M'head: Tied 1-1 after 2, CC struck 3 times in the 3rd, including an empty-net goal.
 J 8 at CC-M'head: Down 2-1 in the 3rd, Alex Barton tied it, but CC scored a PP goal in OT to win 3-2
 J 3 vs. Hamline: Sam Meuwissen had 2 goals and an assist to lead CUW past Hamline 7-4
 J 2 vs. Hamline: CUW led 3-0 early in the 2nd but surrendered 3 unanswered and finished in a 3-3 tie
 D 12 vs. UWS: Lea Jondal made 36 saves, including 3 in OT, as CUW and UWS tied 1-1
 D 11 vs. UWS: Samantha Meuwissen made it a 1-goal game late in the 2nd, but Superior held on and won 2-1
 D 5 vs. UWEC: CUW led 2-1 after 2, but Kristin Faber scored twice in the 3rd for UWEC in a 3-2 win
 D 4 vs. UWEC: The Falcons scored three unanswered goals to beat UWEC 3-2 at home
 N 21 at UWSP: Sarah Lichtie and Samantha Meuwissen each scored in a 4-2 loss at UWSP
 N 20 at UWSP: The Pointers scored 14 seconds apart in the 1st period to build an early lead and went on to win 4-1
 N 7 at St. Catherine: The Falcons scored 2 PP goals in the 3rd to tie it at 3, but lost in OT to St. Kate's in St. Cloud
 N 6 at St. Benedict: Down 1-0 in the 3rd, Jenny Brown tied it and Alisha Java scored the game-winner in a 2-1 win
 N 1 at Buffalo State: Sarah Luberda and Samantha Meuwissen both had four points in a 6-2 win
 O 31 at Buffalo State: Sarah Luberda scored twice to lead CUW to a 4-1 opening victory

FINLANDIA UNIVERSITY, coached by Heather Reinke, 2nd season

| | | | | | |
|-----------------|--------------|-----------------------------|--------------------|----------------|------------|
| Overall: 5-16-0 | NCHA: 1-11-0 | Home: 4-7-0 | Road: 1-8-0 | Neutral: 0-1-0 | OT: 0-0-0 |
| Oct: 1-0-0 | Nov: 1-5-0 | Dec: 1-3-0 | Jan: 2-6-0 | Feb: 0-2-0 | Mar: 0-0-0 |
| vs. MIAC: 3-5-0 | 1-goal: 1-1 | Before holiday break: 3-8-0 | After break: 2-6-0 | | |

Last week: Lost 2-0 vs UWS
 G:
 Last 4 games: 0-4-0
 Last 8 games: 2-6-0

Current Streak: Lost 6

Upcoming Games: Fri-Sat at UWEC

| | | |
|-------------------------------|---------------------------------|-----------------------------|
| When scoring first: 3-3-0 | When out shooting opp: 1-3-0 | When being out shot: 2-13-0 |
| When leading after two: 3-1-0 | When trailing after two: 0-14-0 | When tied after two: 2-1-0 |
| When scoring 3+ goals: 4-2-0 | Opp scores 2 or less: 5-2-0 | vs. ranked opponents: 0-4-0 |

* Jan 8-9 vs Augsburg: First weekend sweep, first consecutive wins since Jan 19-20, 2008 (CUW)

* Ten first-year players on the roster in 2009-10

* Five games in 08-09 lost by 2 goals or less, one of those in overtime

* Six-straight home games Dec 12 – Jan 9, including 4 to start 2010

* First win for then-new head coach Heather Reinke: 5-3 Jan 23, 2008 vs. UWEC (GWG by Emily Conrad; winning goalie – Annika Danielson)

For more info, visit <http://www.finlandia.edu/index.php?id=494>

Finlandia 2009-10
(5-16-0, 1-11-0)

| | | |
|-------------------------|-------------------|---------|
| Oct 31 | vs. MARIAN | W, 5-2 |
| Nov 6 | at St. Catherine | L, 0-4 |
| Nov 7 | at St. Benedict | L, 1-3 |
| Nov 14 | vs. Hamline | L, 3-5 |
| Nov 15 | vs. Hamline | W, 2-0 |
| Nov 21 | at 10 LFC | L, 0-4 |
| Nov 22 | at 10 LFC | L, 1-5 |
| Dec 4 | at MARIAN | L, 2-4 |
| Dec 5 | at MARIAN | W, 3-0 |
| Dec 12 | vs. ADRIAN | L, 0-4 |
| Dec 13 | vs. ADRIAN | L, 3-6 |
| Jan 2 | vs. St. Catherine | L, 1-5 |
| Jan 3 | vs. St. Catherine | L, 0-3 |
| Jan 8 | vs. Augsburg | W, 3-2 |
| Jan 9 | vs. Augsburg | W, 4-1 |
| Jan 15 | at CUW | L, 1-2 |
| Jan 16 | at CUW | L, 0-5 |
| Jan 23 | at 7 UWRF | L, 1-10 |
| Jan 24 | at 7 UWRF | L, 2-4 |
| Feb 5 | vs. UWS | L, 0-2 |
| Feb 6 | vs. UWS | L, 0-3 |
| Feb 12 | at UWEC | 7:00p |
| Feb 13 | at UWEC | 2:00p |
| Feb 19 | vs. UWSP | 7:15p |
| Feb 20 | vs. UWSP | 2:00p |
| All times local | | |
| Heather Reinke (6-40-0) | | |

GAME-BY-GAME

- F 7 vs. UWS: Stephanie LaMore made 46 saves for the second night in a row in a 3-0 loss vs. UWS
- F 6 vs. UWS: Stephanie LaMore made 46 saves for the Lions, but UWS won 2-0
- J 16 at CUW: The Falcons scattered five goals over the 3 periods in a 5-0 shutout to earn a sweep
- J 15 at CUW: Katelyn McLean had a goal and Stephanie LaMore made 42 saves, but the Lions fell 2-1
- J 9 vs. Augsburg: Katelyn McLean had a pair of goals, including the game-winner, as FIN won 4-1 for the sweep
- J 8 vs. Augsburg: Alisha Ellertson scored with 38 seconds left to lift FIN to a 3-2 win
- J 3 vs. St. Kate's: Rachael Bochiechio made 22 saves but St. Kate's won 3-0 with an empty-netter
- J 2 vs. St. Kate's: The Wildcats broke a close game open in the 3rd with 3 goals to win 5-1
- D 13 vs. ADRIAN: Finlandia led 3-2 after 2 but couldn't hold on as Adrian scored 4 times in the 3rd in a 6-3 final
- D 12 vs. ADRIAN: The Lions put 32 shots on goal but couldn't beat goalie Dana Timm in a 4-0 loss
- D 5 at MARIAN: Nicole Schumacher scored twice and Ashley Pavlish made 29 saves in a 3-0 shutout win
- D 4 at MARIAN: Kelly Poelstra and Katelyn McLean tried to jump-start FIN with goals, but the Lions fell 4-2
- N 22 at LFC: Stephanie Lamore and Casey Fiore combined for 51 saves, but Lake Forest prevailed 5-1
- N 21 at LFC: Ashley Pavlish made 44 saves in a 4-0 loss at LFC
- N 15 vs. Hamline: Ashley Pavlish made 27 saves in a 2-0 shutout for the Lions
- N 14 vs. Hamline: Katelyn McLean had two goals, but Hamline's 5-1 lead after 2 proved too much
- N 7 at St. Benedict: Katie Fredianelli opened the scoring for FIN but CSB scored 3 unanswered to win 3-1
- N 6 at St. Catherine: The Wildcats scored 2 PP goals and 1 SH goal in taking it 4-0
- O 31 vs. MARIAN: Five different Lions scored as FIN broke a 2-2 tie in the 3rd with 3 goals to win 5-2

7 LAKE FOREST COLLEGE, coached by Carisa Zaban, 5th season



ORIGINAL MEMBER

| | | | | | |
|-----------------|-------------|-----------------------------|--------------------|----------------|------------|
| Overall: 15-2-2 | NCHA: 9-1-2 | Home: 7-0-1 | Road: 7-2-1 | Neutral: 1-0-0 | OT: 2-0-2 |
| Oct: 1-0-0 | Nov: 6-0-1 | Dec: 1-0-1 | Jan: 7-2-0 | Feb: 0-0-0 | Mar: 0-0-0 |
| vs. MIAC: 4-0-0 | 1-goal: 4-0 | Before holiday break: 8-0-2 | After break: 7-2-0 | | |

Last week: Off

Current Streak: Won 4 Last 4 games: 4-0-0 Last 8 games: 7-1-0

Upcoming Games: Fri-Sat vs 6 UWRF

| | | |
|--------------------------------|--------------------------------|-----------------------------|
| When scoring first: 11-2-1 | When out shooting opp: 12-1-1 | When being out shot: 3-1-1 |
| When leading after two: 12-0-1 | When trailing after two: 3-2-1 | When tied after two: 0-0-0 |
| When scoring 3+ goals: 14-0-1 | Opp scores 2 or less: 13-0-1 | vs. ranked opponents: 1-0-1 |

- * Kim Herring: 10 multi-point games, 7 multi-goal games through first 13 games
- * Obtained #6 national ranking on Dec 14 - highest ranking in team history
- * Opened season with 10-game unbeaten streak (8-0-2)
- * Top 3 scorers from 08-09 return, including All-NCHA defenseman Courtney Bean
- * 2008-09 season ended with loss to NCAA Semifinalist River Falls in O'Brien Cup Semifinals (also 3-1 loss in 3rd place game to UWS)
- * Finishes season with 6-straight home games, all against NCHA opponents

For more info, visit <http://www.lakeforest.edu/foresters/whockey/~index.htm>

| Lake Forest (15-2-2, 9-1-2) | | |
|--------------------------------|-----------------|----------|
| Oct 31 | vs. St. Mary's | W, 5-4 |
| Nov 1 | vs. St. Mary's | W, 4-0 |
| Nov 6 | at 10 UWS | W, 2-1 |
| Nov 7 | at 10 UWS | T, 2-2ot |
| Nov 14 | at Augsburg | W, 6-1 |
| Nov 15 | at Augsburg | W, 6-1 |
| Nov 21 | vs. FIN | W, 4-0 |
| Nov 22 | vs. FIN | W, 5-1 |
| Dec 5 | vs. UWSP | W, 6-1 |
| Dec 6 | vs. UWSP | T, 4-4ot |
| Jan 2 | at Mass. - Bos | L, 1-3 |
| Jan 3 | vs. Bowdoin | W, 3-2ot |
| Jan 5 | at Sacred Heart | W, 7-5 |
| Jan 16 | at ADRIAN | W, 3-2ot |
| Jan 17 | at ADRIAN | L, 1-4 |
| Jan 22 | at MARIAN | W, 6-0 |
| Jan 23 | at MARIAN | W, 3-0 |
| Jan 30 | vs. UWEC | W, 5-2 |
| Jan 31 | vs. UWEC | W, 7-4 |
| Feb 12 | vs. 6 UWRF | 7:00p |
| Feb 13 | vs. 6 UWRF | 2:00p |
| Feb 19 | vs. CUW | 7:00p |
| Feb 20 | vs. CUW | 2:00p |
| All times local | | |
| Carisa Zaban (61-48-18) | | |

| GAME-BY-GAME | |
|--------------|---|
| J 31 | vs. UWEC: Lynn Switaj and Courtney Bean both scored two goals as LFC won 7-4 to finish the sweep |
| J 30 | vs. UWEC: LFC worked for a 3-0 lead after 2; Sam Herron scored two goals and the Foresters win 5-2 |
| J 23 | at MARIAN: LFC scored 2 goals in the opening period, springing the Foresters to a 3-0 win and a sweep |
| J 22 | at MARIAN: Kim Herring broke the school record for points with her 22nd goal of the year as LFC won 6-0 |
| J 17 | at ADRIAN: Sam Herron opened the scoring in the 1st, but ADRIAN scored 4 unanswered to win 4-1 |
| J 16 | at ADRIAN: Down 2-0 after the 2nd, Courtney Bean scored twice to tie it, then Kim Herring win it in OT |
| J 5 | at Sacred Heart: Jessica Dare, Kim Herring and Denise Perez all scored twice in a comeback win at SHU |
| J 3 | vs. Bowdoin: Kim Herring had her 3rd hat trick of the year in scoring all 3 LFC goals in a 3-2 OT win |
| J 2 | at Mass.Boston: LFC suffered its first loss of the year, falling 3-1 to the Beacons |
| D 6 | vs. UWSP: Kim Herring scored twice as LFC had a 2-goal lead in the 2nd, but UWSP came back in a 4-4 final |
| D 5 | vs. UWSP: Kim Herring bagged her 2nd hat trick of the year as LFC cruised to a 6-1 victory |
| N 22 | vs. FIN: The Foresters scored 3 times in the opening 10 minutes and then cruised to their 4th straight win |
| N 21 | vs. FIN: Kim Herring scored 3 times for the hat trick as LFC shutout FIN 4-0 |
| N 15 | at Augsburg: Melissa Kravich bagged a hat trick - all in the 3rd period - to lead LFC to a 6-1 win at Augsburg |
| N 14 | at Augsburg: Lynn Switaj scored two times and LFC pumped in 4 PP goals in beating Augsburg 6-1 |
| N 7 | at UWS: Kim Herring tied the game early in the 3rd on a PP and the teams skated to a 2-2 tie |
| N 6 | at UWS: Kim Herring had a pair of goals in leading LFC to a 2-1 win at #10 UWS |
| N 1 | vs. St. Mary's: Jessica Dare and Kim Herring each scored twice, and Alyssa Wintermute got the shutout |
| O 31 | vs. St. Mary's: Trailing 3-0 after the 1st, LFC roared back to win 5-4, much thanks to a Jessica Dare hat trick |

| LFC in the Rankings | |
|---------------------|----|
| Nov 2 | NR |
| Nov 9 | NR |
| Nov 16 | 10 |
| Nov 23 | 10 |
| Nov 30 | 10 |
| Dec 8 | 7 |
| Dec 14 | 6 |
| Jan 4 | 10 |
| Jan 11 | 10 |
| Jan 18 | NR |
| Jan 25 | NR |
| Feb 1 | 9 |
| Feb 8 | 7 |

MARIAN UNIVERSITY, coached by Mike Cowan, 1st season

| | | | | | |
|-----------------|--------------|-----------------------------|---------------------|----------------|------------|
| Overall: 2-17-0 | NCHA: 1-11-0 | Home: 1-5-0 | Road: 1-12-0 | Neutral: 0-0-0 | OT: 0-0-0 |
| Oct: 0-1-0 | Nov: 0-2-0 | Dec: 2-4-0 | Jan: 0-9-0 | Feb: 0-2-0 | Mar: 0-0-0 |
| vs. MIAC: 1-3-0 | 1-goal: 0-0 | Before holiday break: 2-7-0 | After break: 0-11-0 | | |

Last week: Lost 6-1 at ADRIAN
G: Lund

Lost 3-0 at ADRIAN
G:

Current Streak: Lost 11 Last 4 games: 0-4-0 Last 8 games: 0-8-0

Upcoming Games: Fri-Sat vs UWS

| | | |
|-------------------------------|---------------------------------|-----------------------------|
| When scoring first: 2-1-0 | When out shooting opp: 0-1-0 | When being out shot: 2-15-0 |
| When leading after two: 2-1-0 | When trailing after two: 0-15-0 | When tied after two: 0-1-0 |
| When scoring 3+ goals: 2-1-0 | Opp scores 2 or less: 2-1-0 | vs. ranked opponents: 0-0-0 |

* Marian enters first season of varsity hockey in 2009-10

* Eight-straight road games Dec 11 – Jan 16, including 4 NCHA games; finishes with 4-straight home games

* Sabres inaugural roster: 14 Freshmen, 1 Sophomore, 2 Juniors

* Head coach Mike Cowan comes to Marian after 8 years with Fond du Lac / Waupun of the Wisconsin State High School League

* Marian Timeline: Dec 4, 2008, Marian is officially accepted into NCHA ... Mar 9, 2009, Mike Cowan is hired ... Oct 15, 2009, first team practice is held ... Oct 31, 2009, first scheduled game at Finlandia

For more info, visit <http://www.marianuniversity.edu/interior.aspx?id=10204>

| Marian (2-17-0, 1-11-0) | | |
|--|---------------|---------|
| Oct 31 | at FIN | L, 2-5 |
| Nov 6 | vs. CC-M'head | L, 1-8 |
| Nov 7 | vs. CC-M'head | L, 4-6 |
| Dec 4 | vs. FIN | W, 4-2 |
| Dec 5 | vs. FIN | L, 0-3 |
| Dec 11 | at UWEC | L, 0-9 |
| Dec 12 | at UWEC | L, 0-9 |
| Dec 19 | at Hamline | W, 3-1 |
| Dec 20 | at Hamline | L, 0-2 |
| Jan 9 | at St. Mary's | L, 0-6 |
| Jan 10 | at St. Mary's | L, 2-3 |
| Jan 15 | at UWSP | L, 0-10 |
| Jan 16 | at UWSP | L, 0-8 |
| Jan 22 | vs. LFC | L, 0-6 |
| Jan 23 | vs. LFC | L, 0-3 |
| Jan 28 | at CUW | L, 0-3 |
| Jan 30 | at CUW | L, 0-7 |
| Feb 6 | at ADRIAN | L, 1-6 |
| Feb 7 | at ADRIAN | L, 0-3 |
| Feb 12 | vs. UWS | 7:00p |
| Feb 13 | vs. UWS | 2:00p |
| Feb 19 | vs. UWRF | 7:00p |
| Feb 20 | vs. UWRF | 1:00p |
| All times local Mike Cowan (2-17-0) | | |

GAME-BY-GAME

| | |
|------|--|
| F 7 | at ADRIAN: Kaytlin Ruzicka made 54 saves, but the Sabres fell 3-0 on the road |
| F 6 | at ADRIAN: The Bulldogs led 1-0 after 1, 3-0 after 2 and then pulled away in the 3rd to win 6-1 |
| J 30 | at CUW: Melissa Calder made 53 saves, but the Sabres lost 7-0 at CUW |
| J 28 | at CUW: The Falcons scored two power play goals, which propelled them to a 3-0 win over MARIAN |
| J 23 | vs. LFC: Kaytlin Ruzicka made 49 saves on 52 shots in a 3-0 loss to LFC |
| J 22 | vs. LFC: The Foresters scored twice in the first, 3 times on the 2nd and once in the 3rd to win 6-0 |
| J 16 | at UWSP: UWSP threw 50 shots on the Sabre goal in an 8-0 victory |
| J 15 | at UWSP: The Pointers jumped out to a big lead and never looked back in a 10-0 win |
| J 10 | at St. Mary's: Amy Knutson cut SMU's lead to 3-2 after 2, but the Sabres couldn't score the equalizer in the 3rd |
| J 9 | at St. Mary's: Nicole Olson scored 5 times for SMU in route to a 6-0 victory over MARIAN |
| D 20 | at Hamline: Hamline went up 1-0 in the first and later added an empty-netter to win 2-0 |
| D 19 | at Hamline: Aly Lund scored twice and Melissa Calder made 20 saves as Marian beat Hamline 3-1 in St. Paul |
| D 12 | at UWEC: UW-Eau Claire led 1-0 after the first, then opened up with 4 goals in the 2nd on its way to a 9-0 win |
| D 11 | at UWEC: UW-Eau Claire peppered the Marian net with 57 shots in route to a 9-0 win |
| D 5 | vs. FIN: The Sabres put 29 shots on goal but were shutout by FIN 3-0 |
| D 4 | vs. FIN: Kiley O'Connell had the game-winner as Marian won its first game in history 4-2 |
| N 7 | vs. CC-M'head: Marian led 4-1 in the 3rd but couldn't hold on. Concordia scored the final 5 goals to win 6-4 |
| N 6 | vs. CC-M'head: Amy Knutson scored for the 2nd straight game, but it was all Concordia in the 8-1 final |
| O 31 | at FIN: Amy Knutson scored the first goal in Sabres history, but FIN scored 3 in the 3rd to pull away 5-2 |

UNIV. OF WISCONSIN – EAU CLAIRE, coached by Mike Collins, 10th season



ORIGINAL MEMBER

Overall: 10-8-3 NCHA: 5-5-2 Home: 7-4-1 Road: 3-4-2 Neutral: 0-0-0 OT: 0-0-3
 Oct: 0-1-0 Nov: 3-2-1 Dec: 3-1-0 Jan: 3-3-2 Feb: 1-1-0 Mar: 0-0-0
 vs. MIAC: 4-3-1 1-goal: 2-2 Before holiday break: 6-4-1 After break: 4-4-2

Last week: Won 4-2 vs UWSP Lost 6-2 vs UWSP
 G: Jenkins (2), McKay, Faber G: Malacek, Dickinson

Current Streak: Lost 1 Last 4 games: 1-3-0 Last 8 games: 3-3-2

Upcoming Games: Fri-Sat vs FIN

When scoring first: 8-2-0 When out shooting opp: 7-2-0 When being out shot: 3-6-3
 When leading after two: 8-0-2 When trailing after two: 1-7-1 When tied after two: 1-1-0
 When scoring 3+ goals: 7-2-2 Opp scores 2 or less: 9-1-1 vs. ranked opponents: 0-0-3

- * Jan 8 vs Bethel: 4th shutout of season, ties school record
- * Kristin Faber: Tied school record with 4 goals Jan 13 vs. Augsburg ... 8-point weekend Dec 11-12 vs. MARIAN
- * Taylor Jenkins: Natural hat trick Jan 3 vs. St. Olaf
- * Undefeated last year when leading after two periods
- * 11 of first 14 games of last year decided by 2 goals or less (9-3-2 record over span)

For more info, visit <http://www.uwec.edu/Athletics/whky>

UW-Eau Claire 2009-10

(10-8-3, 5-5-2)

| | | |
|--------|------------------|----------|
| Oct 30 | at Hamline | L, 1-4 |
| Nov 6 | at Bethel | W, 2-0 |
| Nov 7 | vs. 8 St. Thomas | T, 3-3ot |
| Nov 13 | at St. Mary's | W, 2-1 |
| Nov 14 | vs. St. Mary's | L, 1-2 |
| Nov 20 | vs. ADRIAN | L, 3-6 |
| Nov 21 | vs. ADRIAN | W, 7-2 |
| Dec 4 | at CUW | L, 2-3 |
| Dec 5 | at CUW | W, 3-2 |
| Dec 11 | vs. MARIAN | W, 9-0 |
| Dec 12 | vs. MARIAN | W, 9-0 |
| Jan 2 | vs. St. Olaf | L, 1-3 |
| Jan 3 | vs. St. Olaf | W, 5-3 |
| Jan 8 | vs. Bethel | W, 1-0 |
| Jan 13 | vs. Augsburg | W, 8-2 |
| Jan 15 | at 5 UWRF | T, 2-2ot |
| Jan 16 | at 5 UWRF | T, 4-4ot |
| Jan 30 | at LFC | L, 2-5 |
| Jan 31 | at LFC | L, 4-7 |
| Feb 5 | vs. UWSP | W, 4-2 |
| Feb 6 | vs. UWSP | L, 2-6 |
| Feb 12 | vs. FIN | 7:00p |
| Feb 13 | vs. FIN | 2:00p |
| Feb 19 | at UWS | 7:00p |
| Feb 20 | at UWS | 2:00p |

All times local
 Mike Collins (97-133-22)

GAME-BY-GAME

F 6 vs. UWSP: The Pointers busted the game open with 3 goals in the 3rd in route to a 6-2 win
 F 5 vs. UWSP: Kristin Faber had 4 points and Taylor Jenkins scored twice to lead the Blugolds past UWSP
 J 31 at LFC: Beth Dittrich opened the scoring in the 1st, but LFC scored the next 3 to pace a 7-4 victory
 J 30 at LFC: LFC built a 3-0 lead after two and the teams traded goals in the 3rd in route to a 5-2 final
 J 16 at UWRF: Kristin Faber scored twice and UWEC led 4-2 after 2, but UWRF came back and the teams tied 4-4
 J 15 at UWRF: The Blugolds led 2-1 after 2 on goals by Kristin Faber and Meghan Lorenz, but finished in a 2-2 tie
 J 13 vs. Augsburg: Kristin Faber tied a school record with four goals as UWEC cruised in an 8-2 victory
 J 8 vs. Bethel: Danika Porter made 24 saves and Beth Dittrich scored the only goal as UWEC won 1-0
 J 3 vs. St. Olaf: Taylor Jenkins had a pure hat trick, which included the game-winning goal, as UWEC won 5-3
 J 2 vs. St. Olaf: UWEC fired 35 shot on goal but could only score once, falling 3-1 to St. Olaf
 D 12 vs. MARIAN: Kristin Faber had a hat trick and Emily Haluska scored twice as UWEC rolled to a 9-0 win
 D 11 vs. MARIAN: Kristin Faber had 4 points and the Blugolds fired 57 shots on goal in a 9-0 win
 D 5 at CUW: Kristin Faber scored twice in the 3rd in a 3-2 comeback win for UWEC
 D 4 at CUW: Beth Dittrich and Kristin Faber got UWEC out to a 2-0 lead, but CUW scored 3 unanswered to win
 N 21 vs. ADRIAN: Christine Dickinson went for the hat trick in a 7-2 UWEC win
 N 20 vs. ADRIAN: Christine Dickinson had a pair of goals to tie it in the 2nd, but ADRIAN pulled away to win 6-3
 N 14 vs. St. Mary's: Katie Ward tied it up early in the 3rd, but SMU broke the tie with 39 seconds to go to win 2-1
 N 13 at St. Mary's: Kristin Faber had a goal and an assist, and Nicole Lence made 35 saves in a 2-1 win
 N 7 vs. St. Thomas: Christine Dickinson scored twice, the second of which tied the game, and UWEC tied UST
 N 6 at Bethel: Danika Porter stopped all 20 shots she saw and UWEC won 2-0 over Bethel
 O 30 at Hamline: Kelli Johnson tried to start a comeback with her goal at 10:41 of the 2nd, but the Blugolds lost 4-1

6 UNIV. OF WISCONSIN – RIVER FALLS, coached by Joe Cranston, 11th season



ORIGINAL MEMBER

Overall: 13-3-4 NCHA: 7-2-3 Home: 99-1-3 Road: 4-2-1 Neutral: 0-0-0 OT: 1-0-4
 Oct: 0-0-0 Nov: 5-1-1 Dec: 1-1-0 Jan: 5-1-3 Feb: 2-0-0 Mar: 0-0-0
 vs. MIAC: 6-1-1 1-goal: 3-3 Before holiday break: 6-2-1 After break: 7-1-3

Last week: Won 4-1 vs CUW Won 4-1 vs CUW
 G: Hrabe (2), Schmitz, Berner G: Nordness, Jackson, Horgen, Flanagan

Current Streak: Won 2 Last 4 games: 3-0-1 Last 8 games: 6-0-2

Upcoming Games: Tue at Bethel / Fri-Sat at 7 LFC

When scoring first: 11-2-2 When out shooting opp: 11-1-2 When being out shot: 1-2-2
 When leading after two: 12-0-0 When trailing after two: 0-1-2 When tied after two: 1-2-2
 When scoring 3+ goals: 11-0-2 Opp scores 2 or less: 13-1-2 vs. ranked opponents: 1-0-1

- * One loss last 11 games (Jan 9 - Feb 6)
- * Four-game win streak Jan 19 - 29 ... 6-game unbeaten streak Jan 15 - 29
- * Finishes with 5-straight road games
- * Non-conference showdowns: 0-1-1 vs. Gustavus / 2-0-0 vs. St. Thomas
- * 11-game unbeaten streak, Jan 31 – Mar 14, 2009 (10-0-1 record in streak)
- * Tops in 2009: Best start (8-1-1) and longest unbeaten streak (11 games) in school history
- * Lost back-to-back games just once in 08-09 regular season (Jan 17-18 vs. Adrian)

For more info, visit <http://www.uwrf.edu/sports/womenhockey.home.php>

UW-River Falls 2009-10
(13-3-4, 7-2-3)

| | | |
|--------|------------------|----------|
| Nov 6 | at 8 St. Thomas | W, 1-0 |
| Nov 7 | vs. Augsburg | W, 5-0 |
| Nov 13 | vs. 2 Gustavus | T, 3-3ot |
| Nov 14 | vs. Bethel | W, 5-1 |
| Nov 20 | vs. UWS | L, 2-3 |
| Nov 21 | vs. UWS | W, 4-2 |
| Nov 24 | vs. St. Olaf | W, 3-2 |
| Dec 5 | at ADRIAN | W, 4-2 |
| Dec 6 | at ADRIAN | L, 2-3 |
| Jan 9 | at St. Catherine | W, 4-1 |
| Jan 12 | at Gustavus | L, 1-2 |
| Jan 15 | vs. UWEC | T, 2-2ot |
| Jan 16 | vs. UWEC | T, 4-4ot |
| Jan 19 | vs. St. Thomas | W, 2-1ot |
| Jan 23 | vs. FIN | W, 10-1 |
| Jan 24 | vs. FIN | W, 4-2 |
| Jan 29 | at UWSP | W, 3-1 |
| Jan 30 | at UWSP | T, 1-1ot |
| Feb 5 | vs. CUW | W, 4-1 |
| Feb 6 | vs. CUW | W, 4-1 |
| Feb 9 | at Bethel | 7:00p |
| Feb 12 | at LFC | 7:00p |
| Feb 13 | at LFC | 2:00p |
| Feb 19 | at MARIAN | 7:00p |
| Feb 20 | at MARIAN | 1:00p |


All times local
 Joe Cranston (163-99-24)

GAME-BY-GAME

| | |
|------|--|
| F 6 | vs. CUW: Emma Nordness has a goal and an assist and 4 different Falcons scored in a 4-1 win over CUW |
| F 5 | vs. CUW: Breanne Hrabe scored twice and Cassi Campbell made 26 saves in a 4-1 victory |
| J 30 | at UWSP: Katie Flanagan scored short-handed in the 3rd to save a point for the Falcons in a 1-1 tie |
| J 29 | at UWSP: Katie Flanagan score twice and Emma Nordness had two assists as UWRF won 3-1 |
| J 24 | vs. FIN: Jamie Briski scored twice in the 3rd to ice a 4-2 win and finish a sweep of FIN |
| J 23 | vs. FIN: Alyssa Jackson and Jessica Thompson scored twice each as UWRF rolled 10-1 over FIN |
| J 19 | vs. St. Thomas: Melissa Deardorff made 27 saves and Jamie Briski scored 18 seconds into OT in a 2-1 win |
| J 16 | vs. UWEC: The Falcons jumped out to a 2-0 lead, then scrambled back to tie it with 2 more in the 3rd |
| J 15 | vs. UWEC: Jamie Briski scored late in the 3rd to salvage a tie against visiting UWEC |
| J 12 | at Gustavus: Jamie Briski opened the scoring in the 1st, but GAC scored once in the 2nd and 3rd to win 2-1 |
| J 9 | at St. Kate's: Judy Daleiden had a goal and an assist and Melissa Deardorff made 23 saves in a 4-1 win |
| D 6 | at ADRIAN: The Falcons led 2-0 after the 1st, but ADRIAN scored 2 in the 2nd and 1 in the 3rd to win |
| D 5 | at ADRIAN: Jessica Thompson has 2 goals and an assist to lead the Falcons past ADRIAN 4-2 |
| N 24 | vs. St. Olaf: Judy Daleiden, Alyssa Jackson and Kayleigh Bell each scored in a 3-2 win over St. Olaf |
| N 21 | vs. UWS: Ashley Berner broke a 2-2 tie at 14:21 of the 3rd and Laura Conrad added an empty-netter |
| N 20 | vs. UWS: Alyssa Jackson tied it in the 3rd, but UWS scored with 59 seconds left to win 3-2 |
| N 14 | vs. Bethel: Lauren Conrad scored twice while the Falcons were outshooting Bethel 43-12 in a 5-1 victory |
| N 13 | vs. Gustavus: UWRF scored 3 time in 5:26 of the 3rd, but GAC tied it with just 16 seconds to go |
| N 7 | vs. Augsburg: Katie Flanagan had two goals to lead the Falcons past Augsburg 5-0 |
| N 6 | at St. Thomas: Cassi Campbell was perfect in goal, making 41 saves, and UWRF beat #8 St. Thomas 1-0 |

UWRF in the Rankings

| | |
|--------|---|
| Nov 2 | 7 |
| Nov 9 | 6 |
| Nov 16 | 5 |
| Nov 23 | 6 |
| Nov 30 | 4 |
| Dec 8 | 6 |
| Dec 14 | 7 |
| Jan 4 | 6 |
| Jan 11 | 5 |
| Jan 18 | 7 |
| Jan 25 | 6 |
| Feb 1 | 7 |
| Feb 8 | 6 |

UNIV. OF WISCONSIN – STEVENS POINT, coached by Ann Ninnemann, 4th season  **ORIGINAL MEMBER**

| | | | | | |
|-----------------|-------------|-----------------------------|--------------------|----------------|------------|
| Overall: 11-7-2 | NCHA: 6-4-2 | Home: 6-3-1 | Road: 5-4-1 | Neutral: 0-0-0 | OT: 0-1-2 |
| Oct: 1-1-0 | Nov: 6-1-0 | Dec: 0-1-1 | Jan: 3-3-1 | Feb: 1-1-0 | Mar: 0-0-0 |
| vs. MIAC: 5-3-0 | 1-goal: 3-2 | Before holiday break: 7-3-1 | After break: 4-4-1 | | |

Last week: Lost 4-2 at UWEC
 G: Marvin (2)

Won 6-2 at UWEC
 G: Lunneborg (2), Edward, Scheving, Butler, Marvin

Current Streak: Won 1 Last 4 games: 1-2-1 Last 8 games: 4-3-1

Upcoming Games: Sat-Sun vs ADRIAN

| | | |
|-------------------------------|--------------------------------|-----------------------------|
| When scoring first: 8-1-1 | When out shooting opp: 9-2-1 | When being out shot: 2-5-1 |
| When leading after two: 9-0-0 | When trailing after two: 0-6-1 | When tied after two: 2-1-1 |
| When scoring 3+ goals: 8-1-1 | Opp scores 2 or less: 10-2-1 | vs. ranked opponents: 2-4-2 |

* Jan 9 vs Gustavus: First loss of season when opponent scores 2 or less (previously 6-0-0)

* Five-straight wins Oct 31 - Nov 13

* Pointers lose the 08-09 NCHA player of the year Nicole Grossmann, but return All-NCHA selection Dana Carothers ... 9 multi-point games, 1 hat trick for Carothers in 08-09

* Ended 08-09 season with loss to River Falls in playoff championship game, playing 3rd game in 3 days

* 09-10 Schedule Analysis: Nov 6 – Dec 5, nine game stretch with only one opponent who finished with record above .500 last year (Bethel)

* Lost 2-straight games only once (UWRF, UWS) and was never swept in 08-09

For more info, visit <http://athletics.uwsp.edu/index.asp?path=whockey&tab=womenssports>

| UW-Stevens Point 2009-10 (11-7-2, 6-4-2) | | |
|---|-----------------|----------|
| Oct 30 | at 8 St. Thomas | L, 1-3 |
| Oct 31 | at 8 St. Thomas | W, 5-3 |
| Nov 6 | at Augsburg | W, 2-0 |
| Nov 7 | at Bethel | W, 4-2 |
| Nov 8 | vs. CC-M'head | W, 2-1 |
| Nov 13 | vs. St. Olaf | W, 3-2 |
| Nov 14 | vs. St. Olaf | L, 3-4ot |
| Nov 20 | vs. CUW | W, 4-1 |
| Nov 21 | vs. CUW | W, 4-2 |
| Dec 5 | at 10 LFC | L, 1-6 |
| Dec 6 | at 10 LFC | T, 4-4ot |
| Jan 9 | vs. Gustavus | L, 0-2 |
| Jan 15 | vs. MARIAN | W, 10-0 |
| Jan 16 | vs. MARIAN | W, 8-0 |
| Jan 22 | at 8 UWS | W, 2-1 |
| Jan 23 | at 8 UWS | L, 0-1 |
| Jan 29 | vs. 6 UWRF | L, 1-3 |
| Jan 30 | vs. 6 UWRF | T, 1-1ot |
| Feb 5 | at UWEC | L, 2-4 |
| Feb 6 | at UWEC | W, 6-2 |
| Feb 9 | at Gustavus | 7:00p |
| Feb 13 | vs. ADRIAN | 7:00p |
| Feb 14 | vs. ADRIAN | 2:30p |
| Feb 19 | at FIN | 7:15p |
| Feb 20 | at FIN | 2:00p |
| All times local Ann Ninnemann (68-23-13) | | |

| GAME-BY-GAME | |
|--------------|--|
| F 6 | at UWEC: Erin Marvin, Michelle Lunneborg and Brooke Hanson all had 2-point games as UWSP won 6-2 |
| F 5 | at UWEC: Erin Marvin's 2 goals in the 2nd got UWSP back in the game at 3-2, but UWEC won it 4-2 |
| J 30 | vs. UWRF: Dana Carothers scored at :42 of the 3rd to break a scoreless tie, but UWRF tied it for a 1-1 tie |
| J 29 | vs. UWRF: The Pointers were only able to get 1 goal out of 28 shots in a 3-1 loss to UWRF |
| J 23 | at UWS: d'Andra Phillips made 36 saves in a 1-0 loss at UWS |
| J 22 | at UWS: d'Andra Phillips made 39 saves and Sarah Phillips scored the game-winner in a 2-1 Pointer victory |
| J 16 | vs. MARIAN: Samantha Scheving had a goal and 3 assists to lead the Pointers to an 8-0 win |
| J 15 | vs. MARIAN: Brooke Hanson went for the hat trick as the Pointers rolled to a 10-0 win |
| J 9 | vs. Gustavus: d'Andra Phillips made 41 saves, but GAC scored twice in the second and held on to win 2-0 |
| D 6 | at LFC: The Pointers came back from a 2-goal deficit in the 2nd period to tie the game and finish in a 4-4 tie |
| D 5 | at LFC: The Foresters scored 4 times in the 2nd period in route to a 6-1 win |
| N 21 | vs. CUW: Michelle Lunneborg scored once and assisted twice in a 4-2 victory to complete a sweep over CUW |
| N 20 | vs. CUW: Erika Greenen had a pair of assists and four different Pointers scored in a 4-1 win over CUW |
| N 14 | vs. St. Olaf: Dana Carothers tied it with the goalie pulled at 18:33 of the 3rd, but St. Olaf won in OT 4-3 |
| N 13 | vs. St. Olaf: Erin Marvin broke a 2-2 tie at 11:53 of the 3rd to send UWSP to the home win |
| N 8 | vs. CC-M'head: Samantha Scheving broke a 1-1 tie and Staci Pomeroy made 27 saves in a 2-1 UWSP win |
| N 7 | at Bethel: The Pointers trailed 2-1 in the 2nd but responded with 3 goals - 2 by Michelle Lunneborg - to win |
| N 6 | at Augsburg: Tracy Butler and Michelle Lunneborg scored for UWSP in a 2-0 victory |
| O 31 | at St. Thomas: Five different Pointers scored, including Jessica Edward with the GWG, as UWSP won 5-3 |
| O 30 | at St. Thomas: Sarah Phillips tallied the lone Pointer goal in a 3-1 loss at #8 St. Thomas |

| UWSP in the Rankings | |
|----------------------|----|
| Nov 2 | NR |
| Nov 9 | 10 |
| Nov 16 | NR |
| Nov 23 | NR |
| Nov 30 | NR |
| Dec 8 | NR |
| Dec 14 | NR |
| Jan 4 | NR |
| Jan 11 | NR |
| Jan 18 | NR |
| Jan 25 | NR |
| Feb 1 | NR |
| Feb 8 | NR |

UNIV. OF WISCONSIN – SUPERIOR, coached by Dan Laughlin, 7th season



ORIGINAL MEMBER

Overall: 11-7-2 NCHA: 5-5-2 Home: 5-4-1 Road: 6-3-1 Neutral: 0-0-0 OT: 0-0-2
 Oct: 0-0-0 Nov: 4-3-1 Dec: 2-0-1 Jan: 3-4-0 Feb: 2-0-0 Mar: 0-0-0
 vs. MIAC: 5-2-0 1-goal: 6-6 Before holiday break: 6-3-2 After break: 5-4-0

Last week: Won 2-0 at FIN Won 3-0 at FIN
 G: Martin, Katz G: Holland (3)

Current Streak: Won 2 Last 4 games: 1-3-0 Last 8 games: 3-4-1

Upcoming Games: Tue vs St. Thomas / Fri-Sat at MARIAN

When scoring first: 11-4-0 When out shooting opp: 6-4-2 When being out shot: 5-3-0
 When leading after two: 10-0-1 When trailing after two: 0-5-1 When tied after two: 1-2-0
 When scoring 3+ goals: 7-0-0 Opp scores 2 or less: 11-6-2 vs. ranked opponents: 3-2-0

- * Snapped 3-game losing streak with sweep at FIN Feb 5-6
- * Highest ranking of season (#8) obtained Jan 18 after sweep of St. Ben's
- * Melissa Kunzelman: 87 saves over 3 games Dec 8 - 12 (2-0-1 record)
- * Top 3 scorers from 08-09 all return, including All-NCHA selection Jodi Holland ... Holland also led the NCHA in goals last year
- * Battling in January: Yellowjackets January schedule features 3 of 4 opponents who finished with combined 08-09 win percentage of .759, all of which were ranked at some point last season.
- * Jasmine Pollock: 7 multi-point games in 08-09

For more info, visit <http://www.uwsuper.edu/athletics/womens/hockey/index.cfm>

UW-Superior 2009-10
(11-7-2, 5-5-2)

| | | |
|--------|------------------|----------|
| Nov 6 | vs. LFC | L, 1-2 |
| Nov 7 | vs. LFC | T, 2-2ot |
| Nov 13 | at CC-M'head | W, 3-2 |
| Nov 14 | at CC-M'head | L, 1-2 |
| Nov 17 | vs.3 Gustavus | W, 3-2 |
| Nov 20 | at 5 UWRF | W, 3-2 |
| Nov 21 | at 5 UWRF | L, 2-4 |
| Nov 24 | vs. Bethel | W, 3-2 |
| Dec 8 | at 10 St. Thomas | W, 3-0 |
| Dec 11 | at CUW | W, 2-1 |
| Dec 12 | at CUW | T, 1-1ot |
| Jan 15 | vs. St. Benedict | W, 5-0 |
| Jan 16 | vs. St. Benedict | W, 2-0 |
| Jan 22 | vs. UWSP | L, 1-2 |
| Jan 23 | vs. UWSP | W, 1-0 |
| Jan 26 | at 8 Gustavus | L, 1-2 |
| Jan 29 | vs. ADRIAN | L, 0-1 |
| Jan 30 | vs. ADRIAN | L, 1-2 |
| Feb 5 | at FIN | W, 2-0 |
| Feb 6 | at FIN | W, 3-0 |
| Feb 9 | vs. St. Thomas | 7:00p |
| Feb 12 | at MARIAN | 8:00p |
| Feb 13 | at MARIAN | 12:00p |
| Feb 19 | vs. UWEC | 7:00p |
| Feb 20 | vs. UWEC | 2:00p |

All times local
 Dan Laughlin (125-46-13)

GAME-BY-GAME

F 7 at FIN: Jodi Holland scored all three 'Jacket goals in a 3-0 win over FIN; Brittany Dunkel had two assists
 F 6 at FIN: Ashley Martin opened the scoring in the 1st, a crucial goal as UWS won 2-0 with 48 shots on goal
 J 30 vs. ADRIAN: Shana Katz scored the lone 'Jacket goal on the weekend in a 2-1 loss at home
 J 29 vs. ADRIAN: Dana Timm stopped all 17 UWS shots on goal in a 1-0 ADRIAN win
 J 26 at Gustavus: Melissa Kunzelman made 33 saves, but Gustavus broke a 1-1 tie midway through the 3rd to win
 J 23 vs. UWSP: Jodi Holland scored in the 1st and Melissa Kunzelman made 18 saves in a 1-0 win over UWSP
 J 22 vs. UWSP: Ashlee Olson scored the 'Jackets lone goal on 40 UWS shots in a 2-1 loss to UWSP
 J 16 vs. St. Ben's: Ashley Martin scored both of UWS' goals in a 2-0 shutout of St. Ben's
 J 15 vs. St. Ben's: Chelsey Wierschem scored twice as UWS started the new year with a 5-0 win
 D 12 at CUW: Jasmine Pollack tied the game at 11:32 of the 3rd on the power play as the teams finished in a 1-1 tie
 D 11 at CUW: Melissa Kunzelman made 29 saves as UWS held on to win 2-1 on the road
 D 8 at St. Thomas: Melissa Kunzelman banked a 28-save shutout as UWS knocked off #10 St. Thomas 3-0
 N 24 vs. Bethel: UWS went up 2-0 after 1 but needed a Jodi Holland goal at 15:17 of the 3rd to gain a 3-2 win
 N 21 at UWRF: Jessica Tyra tied the game in the 3rd, but UWRF stole the lead back and later added an EN goal
 N 20 at UWRF: Kim Schmeichel scored the game-winner with 59 seconds to go in a 3-2 win at UWRF
 N 17 vs. Gustavus: Chelsey Wierschem scored midway through the 3rd to put UWS ahead for good at 3-2
 N 14 at Concordia-M'head: CC broke a 1-1 tie at 15:24 of the 3rd; Melissa Kunzelman made 36 saves in the 2-1 loss
 N 13 at Concordia-M'head: Melissa Kunzelman made 38 saves in leading UWS past CC 3-2 on the road
 N 7 vs. LFC: UWS carried a 2-1 lead into the 3rd, but Kim Herring tied it for LFC and the teams finished in a tie
 N 6 vs. LFC: Jodi Holland opened the scoring for UWS, but LFC prevailed 2-1 in the opener

UWS in the Rankings

| | |
|--------|----|
| Nov 2 | 10 |
| Nov 9 | NR |
| Nov 16 | NR |
| Nov 23 | 9 |
| Nov 30 | 10 |
| Dec 8 | NR |
| Dec 14 | 9 |
| Jan 4 | 9 |
| Jan 11 | 9 |
| Jan 18 | 8 |
| Jan 25 | 9 |
| Feb 1 | NR |
| Feb 8 | NR |