



WOMEN'S DIVISION

Northern Collegiate Hockey Association

Established 1980 | www.nchahockey.org

Hockey Communications * 651-442-8921 * brianwmonahan@yahoo.com

Brian Monahan * 1147 Cherokee Avenue Saint Paul, Minnesota 55118

ADRIAN	CONCORDIA	FINLANDIA	LAKE FOREST	MARIAN	ST. NORBERT	ST. SCHOLASTICA	UW - EAU CLAIRE	UW - RIVER FALLS	UW - STEVENS POINT	UW - STOUT	UW - SUPERIOR
--------	-----------	-----------	-------------	--------	-------------	-----------------	-----------------	------------------	--------------------	------------	---------------

2009-10 Women's Standings

	W	L	T	PTS
10 Lake Forest (5-0-1)	1	0	1	3
UW-Superior (1-2-1)	0	1	1	1
5 UW-River Falls (3-0-1)	0	0	0	0
Concordia-Wis. (3-1)	0	0	0	0
UW-Stevens Point (5-2)	0	0	0	0
UW-Eau Claire (2-2-1)	0	0	0	0
Finlandia (2-3)	0	0	0	0
Marian (0-3)	0	0	0	0
Adrian (0-4)	0	0	0	0

8 Indicates uscho.com national ranking

SCOREBOARD

Fri, Nov 6

UW-Superior	3	Concordia-M'head	2
UW-Eau Claire	2	St. Mary's	1
St. Olaf	2	UW-Stevens Point	3
Gustavus	3	UW-River Falls	3ot

Sat, Nov 14

UW-Superior	1	Concordia-M'head	2
St. Mary's	2	UW-Eau Claire	1
Bethel	1	UW-River Falls	5
Lake Forest	6	Augsburg	1
St. Olaf	4	UW-Stevens Point	3ot
Hamline	5	Finlandia	3

Sun, Nov 15

Hamline	0	Finlandia	2
Lake Forest	6	Augsburg	1

McLean Grabs Player of the Week

SAINT PAUL, MINN. (November 17, 2009) – The Northern Collegiate Hockey Association announced today Katelyn McLean of Finlandia University is the player of the week in the women's division. McLean (Houghton, Mich.) had four points in a split with Hamline last weekend for the Lions.

On Saturday night McLean, a junior forward, picked the Lions up in an attempted comeback against the Pipers. She scored two goals and assisted on another in the eventual 5-3 loss.

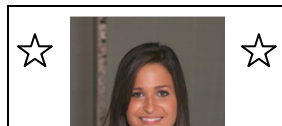
McLean provided a crucial power play goal on Sunday afternoon, giving the Lions a bit of breathing room at 2-0 in the 2nd period. Finlandia would hold on to that lead and win by a final of 2-0. The win was critical for the Lions, having lost its previous three games. It also doubled its win total from last year and built momentum into this coming weekend series at #10 Lake Forest.

Other outstanding performances last week in the women's division: Melissa Kravich, Lake Forest - Hat trick, four total goals in sweep of Augsburg Katie Flanagan, UW-River Falls - Two goals, assist in two non-conference games Samantha Sheving, UW-Stevens Point - Assist, +3 in split with St. Olaf Shannon Nelson, UW-Eau Claire - Assist on tying goal Saturday night



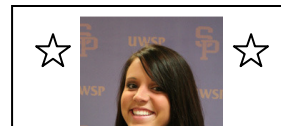
*Katelyn McLean
Jr, F, Finlandia
Houghton, MI*

Sat: 3 points vs. Hamline
Sun: Goal vs. Hamline



*Melissa Kravich
Jr, F, Lake Forest
Wilmette, IL*

Sat: G, 2 A at Augsburg
Sun: Hat trick at Augsburg



*Samantha Sheving
So, D, UW-Stevens Point
Warroad, MN*

A, +3 vs. St. Olaf

Nov 16 USCHO.COM NATIONAL POLL

Team	Record	Prev
1 Amherst	0-0-0	1
2 Elmira	3-0-0	3
3 Gustavus	0-0-1	2
4 Plattsburgh	2-0-0	4
5 UW-River Falls	3-0-1	6
6 Middlebury	0-0-0	5
7 RIT	1-0-1	7
8 Norwich	5-0-0	8
9 Neumann	4-1-1	9
10 Lake Forest	5-0-1	NR

Upcoming Games - Full schedules inside, all times local

	Visitor	Home	Start Time
Tue Nov 17	Gustavus	UW-Superior	7:00p
Fri Nov 20	UW-Superior	UW-River Falls	2:05p
Fri Nov 20	Concordia-Wis.	UW-Stevens Point	7:00p
Fri Nov 20	Adrian	UW-Eau Claire	7:00p
Sat Nov 21	UW-Superior	UW-River Falls	2:05p
Sat Nov 21	Concordia-Wis.	UW-Stevens Point	2:30p
Sat Nov 21	Adrian	UW-Eau Claire	7:00p
Sat Nov 21	Finlandia	Lake Forest	7:00p
Sat Nov 21	St. Scholastica	Marian	8:15p*
Sun Nov 22	St. Scholastica	Marian	1:15p*
Sun Nov 22	Finlandia	Lake Forest	2:00p

* Exhibition

TEAM NOTES

ADRIAN COLLEGE, coached by Melissa Lomanto, 2nd season

Overall: 0-4-0	NCHA: 0-0-0	Home: 0-0-0	Road: 0-4-0	Neutral: 0-0-0	OT: 0-0-0
Oct: 0-2-0	Nov: 0-2-0	Dec: 0-0-0	Jan: 0-0-0	Feb: 0-0-0	Mar: 0-0-0
vs. MIAC: 0-0-0	1-goal: 0-2	Before holiday break: 0-4-0	After break: 0-0-0		

Last week: Off

Current Streak: Lost 4 Last 4 games: 0-4-0 Last 8 games:

Upcoming Games: Fri-Sat at UWEC

When scoring first: 0-0-0	When out shooting opp: 0-4-0	When being out shot: 0-0-0
When leading after two: 0-0-0	When trailing after two: 0-3-0	When tied after two: 0-1-0
When scoring 3+ goals: 0-1-0	Opp scores 2 or less: 0-0-0	vs. ranked opponents: 0-0-0

* Jessica Grubbs: 2 goals Oct 31 at Neumann

* Opens with 6-straight road games, Oct 30 – Nov 21

* Returns top two scorers in Stacey Kempson and Jessica Grubbs, both whom averaged more than a point per game in 2008-09

* Went 3-1 against NCAA tournament teams last year, earning a split against Gustavus and sweeping River Falls

For more info, visit <http://adrianbulldogs.cstv.com/sports/w-hockey/adri-w-hockey-body.html>

Adrian 2009-10

(0-4-0, 0-0-0)

Oct 30	at Neumann	L, 1-5
Oct 31	at Neumann	L, 2-3
Nov 6	at Utica	L, 3-4
Nov 7	at Utica	L, 2-4
Nov 20	at UWEC	7:00p
Nov 21	at UWEC	7:00p
Nov 29	vs. Chatham	3:00p
Dec 5	vs. UWRF	3:00p
Dec 6	vs. UWRF	12:00p
Dec 12	at FIN	7:00p
Dec 13	at FIN	2:00p
Dec 18	at Rochester IT	7:00p
Dec 19	at Rochester IT	2:00p
Jan 9	at Potsdam	6:00p
Jan 10	at TBA	TBA
Jan 16	vs. LFC	7:00p
Jan 17	vs. LFC	2:00p
Jan 22	vs. CUW	5:00p
Jan 23	vs. CUW	12:00p
Jan 29	at UWS	7:05p
Jan 30	at UWS	1:00p

GAME-BY-GAME

N 7	at Utica: Adrian peppered the Utica goal with 50 shots but could only muster 2 goals, losing 4-2
N 6	at Utica: Adrian built a 3-1 lead midway through the 2nd, but Utica roared back with 3 goals to win 4-3
O 31	at Neumann: Down 3-0, Jessica Grubbs scored twice, but the Bulldog comeback fell short as they lost 3-2
O 30	at Neumann: Neumann shot out to a 3-0 after the 1st and went on to win 5-1 in the opener

Feb 6	vs. Marian	7:00p
Feb 7	vs. Marian	2:00p
Feb 13	at UWSP	7:00p
Feb 14	at UWSP	2:30p
All times local		
Melissa Lomanto (18-10-1)		

CONCORDIA UNIVERSITY WISCONSIN, coached by Jim Ingman, 3rd season

Overall: 3-1-0 NCHA: 0-0-0 Home: 0-0-0 Road: 3-1-0 Neutral: 0-1-0 OT: 0-1-0
 Oct: 1-0-0 Nov: 2-1-0 Dec: 0-0-0 Jan: 0-0-0 Feb: 0-0-0 Mar: 0-0-0
 vs. MIAC: 1-1-0 1-goal: 1-1 Before holiday break: 3-1-0 After break: 0-0-0

Last week: Off

Current Streak: Lost 1 Last 4 games: 3-1-0 Last 8 games:

Upcoming Games: Fri-Sat at UWSP

When scoring first: 2-0-0 When out shooting opp: 3-1-0 When being out shot: 0-0-0
 When leading after two: 2-0-0 When trailing after two: 1-1-0 When tied after two: 0-0-0
 When scoring 3+ goals: 2-1-0 Opp scores 2 or less: 3-0-0 vs. ranked opponents: 0-0-0

- * Sarah Luberda: 6-point weekend Oct 31 - Nov 1 at Buffalo State (4-2-6)
- * Eliminated from O'Brien Cup playoffs in first round last season, losing 4-1 to UW-Stevens Point
- * Earned first playoff berth in team history (2nd season)
- * 1st win in team history (2 seasons) Nov 7, 2008 vs. St. Olaf 7-5 ... GW goal by Alisha Java ... Winning goalie – Kari Hunter
- * 5 of opening 7 games last season decided by 2 goals or less
- * Opens with 6-straight road games and finishes with 4-straight road games

For more info, visit <http://athletics.cuw.edu/sports/whockey/index.cfm>

Concordia-Wisconsin 2009-10
(3-1-0, 0-0-0)

Oct 31	at Buffalo State	W, 4-1
Nov 1	at Buffalo State	W, 6-2
Nov 6	at St. Benedict	W, 2-1
Nov 7	at St. Catherine	L, 3-4ot
Nov 20	at UWSP	7:00p
Nov 21	at UWSP	2:30p
Dec 4	vs. UWEC	7:00p
Dec 5	vs. UWEC	4:00p
Dec 11	vs. UWS	7:00p
Dec 12	vs. UWS	2:00p
Jan 2	vs. Hamline	7:00p
Jan 3	vs. Hamline	2:00p
Jan 8	at CC-M'head	7:00p
Jan 9	at CC-M'head	2:00p
Jan 10	at St. Olaf	2:00p
Jan 15	vs. FIN	7:00p
Jan 16	vs. FIN	2:00p
Jan 22	at ADRIAN	5:00p
Jan 23	at ADRIAN	12:00p
Jan 28	vs. MARIAN	8:00p
Jan 30	vs. MARIAN	4:00p

GAME-BY-GAME

N 7 at St. Catherine: The Falcons scored 2 PP goals in the 3rd to tie it at 3, but lost in OT to St. Kate's in St. Cloud
 N 6 at St. Benedict: Down 1-0 in the 3rd, Jenny Brown tied it and Alisha Java scored the game-winner in a 2-1 win
 N 1 at Buffalo State: Sarah Luberda and Samantha Meuwissen both had four points in a 6-2 win
 O 31 at Buffalo State: Sarah Luberda scored twice to lead CUW to a 4-1 opening victory

Feb 5	at UWRF	7:05p
Feb 6	at UWRF	2:05p
Feb 19	at LFC	7:00p
Feb 20	at LFC	2:00p
All times local		
		Jim Ingman (9-40-6)

FINLANDIA UNIVERSITY, coached by Heather Reinke, 2nd season

Overall: 2-3-0	NCHA: 0-0-0	Home: 2-1-0	Road: 0-2-0	Neutral: 0-1-0	OT: 0-0-0
Oct: 1-0-0	Nov: 1-3-0	Dec: 0-0-0	Jan: 0-0-0	Feb: 0-0-0	Mar: 0-0-0
vs. MIAC: 1-3-0	1-goal: 0-0	Before holiday break: 2-3-0	After break: 0-0-0		

Last week:	Lost 5-3 vs. Hamline	Won 2-0 vs. Hamline
	G: McLean (2), Fredianelli	G: Ellertson, McLean

Current Streak: Won 1 Last 4 games: 1-3-0 Last 8 games:

Upcoming Games: Sat-Sun at LFC

When scoring first:	2-1-0	When out shooting opp:	0-1-0	When being out shot:	1-2-0
When leading after two:	1-0-0	When trailing after two:	0-3-0	When tied after two:	1-0-0
When scoring 3+ goals:	1-1-0	Opp scores 2 or less:	2-0-0	vs. ranked opponents:	0-0-0

- * Ten first-year players on the roster in 2009-10
- * Five games in 08-09 lost by 2 goals or less, one of those in overtime
- * Six-straight home games Dec 12 – Jan 9, including 4 to start 2010
- * First win for then-new head coach Heather Reinke: 5-3 Jan 23, 2008 vs. UWEC (GWG by Emily Conrad; winning goalie – Annika Danielson)

For more info, visit <http://www.finlandia.edu/index.php?id=494>

Finlandia 2009-10 (2-3-0, 0-0-0)		
Oct 31	vs. MARIAN	W, 5-2
Nov 6	at St. Catherine	L, 0-4
Nov 7	at St. Benedict	L, 1-3
Nov 14	vs. Hamline	L, 3-5
Nov 15	vs. Hamline	W, 2-0
Nov 21	at 10 LFC	7:00p
Nov 22	at 10 LFC	2:00p
Dec 4	at MARIAN	7:00p
Dec 5	at MARIAN	2:00p
Dec 12	vs. ADRIAN	7:00p
Dec 13	vs. ADRIAN	2:00p
Jan 2	vs. St. Catherine	7:00p
Jan 3	vs. St. Catherine	2:00p
Jan 8	vs. Augsburg	1:00p
Jan 9	vs. Augsburg	1:00p
Jan 15	at CUW	7:00p
Jan 16	at CUW	2:00p
Jan 23	at UWRF	2:05p
Jan 24	at UWRF	2:05p
Feb 5	vs. UWS	7:15p
Feb 6	vs. UWS	2:00p
Feb 12	at UWEC	7:00p
Feb 13	at UWEC	2:00p
Feb 19	vs. UWSP	7:15p
Feb 20	vs. UWSP	2:00p
All times local		
Heather Reinke (3-27-0)		

GAME-BY-GAME	
N 15	vs. Hamline: Ashley Pavlish made 27 saves in a 2-0 shutout for the Lions
N 14	vs. Hamline: Katelyn McLean had two goals, but Hamline's 5-1 lead after 2 proved too much
N 7	at St. Benedict: Katie Fredianelli opened the scoring for FIN but CSB scored 3 unanswered to win 3-1
N 6	at St. Catherine: The Wildcats scored 2 PP goals and 1 SH goal in taking it 4-0
O 31	vs. MARIAN: Five different Lions scored as FIN broke a 2-2 tie in the 3rd with 3 goals to win 5-2

10 LAKE FOREST COLLEGE, coached by Carisa Zaban, 5th season

Overall: 5-0-1	NCHA: 1-0-1	Home: 2-0-0	Road: 3-0-1	Neutral: 0-0-0	OT: 0-0-1
Oct: 1-0-0	Nov: 4-0-1	Dec: 0-0-0	Jan: 0-0-0	Feb: 0-0-0	Mar: 0-0-0
vs. MIAC: 4-0-0	1-goal: 2-0	Before holiday break: 5-0-1	After break: 0-0-0		

Last week: Won 6-1 at Augsburg
 G: Trebilcock, Kravich, Switaj (2), Bean, Herron
 Won 6-1 at Augsburg
 G: Kravich (3), Herring, Dare, Caldwell

Current Streak: Won 2 Last 4 games: 3-0-1 Last 8 games:

Upcoming Games: Sat-Sun vs. FIN

When scoring first: 3-0-0	When out shooting opp: 4-0-0	When being out shot: 1-0-1
When leading after two: 4-0-0	When trailing after two: 1-0-1	When tied after two: 0-0-0
When scoring 3+ goals: 4-0-0	Opp scores 2 or less: 4-0-1	vs. ranked opponents: 1-0-1

- * Kim Herring: 5 multi-point games in first 6 games played (6-6-12)
- * Top 3 scorers from 08-09 return, including All-NCHA defenseman Courtney Bean
- * 2008-09 season ended with loss to NCAA Semifinalist River Falls in O'Brien Cup Semifinals (also 3-1 loss in 3rd place game to UWS)
- * Finishes season with 6-straight home games, all of which are against NCHA opponents
- * Through Nov 17 last year, 42.8% of LF's goals had been PP goals
- * 2-0-1 in OT last season

For more info, visit <http://www.lakeforest.edu/foresters/whockey/~index.htm>

Lake Forest (5-0-1, 1-0-1)		
Oct 31	vs. St. Mary's	W, 5-4
Nov 1	vs. St. Mary's	W, 4-0
Nov 6	at 10 UWS	W, 2-1
Nov 7	at 10 UWS	T, 2-2ot
Nov 14	at Augsburg	W, 6-1
Nov 15	at Augsburg	W, 6-1
Nov 21	vs. FIN	7:00p
Nov 22	vs. FIN	2:00p
Dec 5	vs. UWSP	2:00p
Dec 6	vs. UWSP	2:00p
Jan 2	at Mass. - Bos	4:00p
Jan 3	at TBA	TBA
Jan 5	at Sacred Heart	1:00p
Jan 16	at ADRIAN	7:00p
Jan 17	at ADRIAN	2:00p
Jan 22	at MARIAN	7:00p
Jan 23	at MARIAN	12:30p
Jan 30	vs. UWEC	2:00p
Jan 31	vs. UWEC	2:00p
Feb 12	vs. UWRF	7:00p
Feb 13	vs. UWRF	2:00p
Feb 19	vs. CUW	7:00p
Feb 20	vs. CUW	2:00p
All times local Carisa Zaban (51-46-17)		

GAME-BY-GAME

- N 15 at Augsburg: Melissa Kravich bagged a hat trick - all in the 3rd period - to lead LFC to a 6-1 win at Augsburg
- N 14 at Augsburg: Lynn Switaj scored two times and LFC pumped in 4 PP goals in beating Augsburg 6-1
- N 7 at UWS: Kim Herring tied the game early in the 3rd on a PP and the teams skated to a 2-2 tie
- N 6 at UWS: Kim Herring had a pair of goals in leading LFC to a 2-1 win at #10 UWS
- N 1 vs. St. Mary's: Jessica Dare and Kim Herring each scored twice, and Alyssa Wintermute got the shutout
- O 31 vs. St. Mary's: Trailing 3-0 after the 1st, LFC roared back to win 5-4, much thanks to a Jessica Dare hat trick

MARIAN UNIVERSITY, coached by Mike Cowan, 1st season

Overall: 0-3-0	NCHA: 0-0-0	Home: 0-2-0	Road: 0-1-0	Neutral: 0-0-0	OT: 0-0-0
Oct: 0-1-0	Nov: 0-2-0	Dec: 0-0-0	Jan: 0-0-0	Feb: 0-0-0	Mar: 0-0-0
vs. MIAC: 0-2-0	1-goal: 0-0	Before holiday break: 0-3-0	After break: 0-0-0		

Last week: Off

Current Streak: Lost 3	Last 4 games:	Last 8 games:
------------------------	---------------	---------------

Upcoming Games: Sat-Sun vs. St. Scholastica (exh.)

When scoring first: 0-1-0	When out shooting opp: 0-0-0	When being out shot: 0-2-0
When leading after two: 0-1-0	When trailing after two: 0-1-0	When tied after two: 0-1-0
When scoring 3+ goals: 0-1-0	Opp scores 2 or less: 0-0-0	vs. ranked opponents: 0-0-0

* Marian enters first season of varsity hockey in 2009-10

* Eight-straight road games Dec 11 – Jan 16, including 4 NCHA games, finishes with 4-straight home games

* Sabres inaugural roster: 14 Freshmen, 1 Sophomore, 2 Juniors

* Head coach Mike Cowan comes to Marian after 8 years with Fond du Lac / Waupun of the Wisconsin State High School League

* Marian Timeline: Dec 4, 2008, Marian is officially accepted into NCHA ... Mar 9, 2009, Mike Cowan is hired ... Oct 15, 2009, first team practice is held ... Oct 31, 2009, first scheduled game at Finlandia

For more info, visit <http://www.marianuniversity.edu/interior.aspx?id=10204>

Marian (0-3-0, 0-0-0)		
Oct 31	at FIN	L, 2-5
Nov 6	vs. CC-M'head	L, 1-8
Nov 7	vs. CC-M'head	L, 4-6
Nov 21	*vs. St. Scholast	8:15p
Nov 22	*vs. St. Scholast	1:15p
Dec 4	vs. FIN	7:00p
Dec 5	vs. FIN	2:00p
Dec 11	at UWEC	7:00p
Dec 12	at UWEC	7:00p
Dec 19	at Hamline	7:15p
Dec 20	at Hamline	1:00p
Jan 9	at St. Mary's	2:00p
Jan 10	at St. Mary's	2:00p
Jan 15	at UWSP	7:00p
Jan 16	at UWSP	2:30p
Jan 22	vs. LFC	7:00p
Jan 23	vs. LFC	12:30p
Jan 28	at CUW	8:00p
Jan 30	at CUW	4:00p
Feb 6	at ADRIAN	7:00p
Feb 7	at ADRIAN	2:00p
Feb 12	vs. UWS	7:00p
Feb 13	vs. UWS	2:00p
Feb 19	vs. UWRF	7:00p
Feb 20	vs. UWRF	1:00p
* Exhibition game		
All times local		
Mike Cowan (0-3-0)		

GAME-BY-GAME	
N 7	vs. CC-M'head: Marian led 4-1 in the 3rd but couldn't hold on. Concordia scored the final 5 goals to win 6-4
N 6	vs. CC-M'head: Amy Knutson scored for the 2nd straight game, but it was all Concordia in the 8-1 final
O 31	at FIN: Amy Knutson scored the first goal in Sabres history, but FIN scored 3 in the 3rd to pull away 5-2

5 UNIVERSITY OF WISCONSIN – RIVER FALLS, coached by Joe Cranston, 11th season

Overall: 3-0-1	NCHA: 0-0-0	Home: 2-0-1	Road: 1-0-0	Neutral: 0-0-0	OT: 0-0-1
Oct: 0-0-0	Nov: 3-0-1	Dec: 0-0-0	Jan: 0-0-0	Feb: 0-0-0	Mar: 0-0-0
vs. MIAC: 3-0-1	1-goal: 1-0	Before holiday break: 3-0-1	After break: 0-0-0		

Last week: Tied 3-3 OT vs. **2** Gustavus
 G: Flanagan, Briski, Ryder

Won 5-1 vs. Bethel
 G: Conrad (2), Flanagan, Thompson, Schmitz

Current Streak: Won 1 Last 4 games: 3-0-1 Last 8 games:

Upcoming Games: Fri-Sat vs. UWS

When scoring first: 3-0-0	When out shooting opp: 2-0-0	When being out shot: 1-0-1
When leading after two: 3-0-0	When trailing after two: 0-0-0	When tied after two: 0-0-1
When scoring 3+ goals: 2-0-1	Opp scores 2 or less: 3-0-0	vs. ranked opponents: 1-0-1

- * Finishes with 5-straight road games
- * Non-conference showdowns: 2 games each against Gustavus and St. Thomas
- * 11-game unbeaten streak, Jan 31 – Mar 14, 2009 (10-0-1 record in streak)
- * Tops in 2009: Best start (8-1-1) and longest unbeaten streak (11 games) in school history
- * First road loss of season: Jan 27 at #1 Gustavus (4-0-1 previously) ... First regular season road loss since Dec 1, 2007 at UWSP (13 games)
- * Lost back-to-back games just once in 08-09 regular season (Jan 17-18 vs. Adrian)

For more info, visit <http://www.uwrf.edu/sports/womenhockey.home.php>

UW-River Falls 2009-10
(3-0-1, 0-0-0)

Nov 6	at 8 St. Thomas	W, 1-0
Nov 7	vs. Augsburg	W, 5-0
Nov 13	vs. 2 Gustavus	T, 3-3ot
Nov 14	vs. Bethel	W, 5-1
Nov 20	vs. UWS	2:05p
Nov 21	vs. UWS	2:05p
Nov 24	vs. St. Olaf	7:05p
Dec 5	at ADRIAN	3:00p
Dec 6	at ADRIAN	12:00p
Jan 9	at St. Catherine	7:30p
Jan 12	at Gustavus	7:00p
Jan 15	vs. UWEC	7:05p
Jan 16	vs. UWEC	7:05p
Jan 19	vs. St. Thomas	7:05p
Jan 23	vs. FIN	2:05p
Jan 24	vs. FIN	2:05p
Jan 29	at UWSP	7:00p
Jan 30	at UWSP	2:30p
Feb 5	vs. CUW	7:05p
Feb 6	vs. CUW	2:05p
Feb 9	at Bethel	7:00p
Feb 12	at LFC	7:00p
Feb 13	at LFC	2:00p
Feb 19	at MARIAN	7:00p
Feb 20	at MARIAN	1:00p

All times local
 Joe Cranston (153-96-21)

GAME-BY-GAME

- N 14 vs. Bethel: Lauren Conrad scored twice while the Falcons were outshooting Bethel 43-12 in a 5-1 victory
- N 13 vs. Gustavus: UWRF scored 3 time in 5:26 of the 3rd, but GAC tied it with just 16 seconds to go
- N 7 vs. Augsburg: Katie Flanagan had two goals to lead the Falcons past Augsburg 5-0
- N 6 at St. Thomas: Cassi Campbell was perfect in goal, making 41 saves, and UWRF beat #8 St. Thomas 1-0

UWRF in the Rankings

Nov 2	7
Nov 9	6
Nov 16	5

UNIVERSITY OF WISCONSIN – STEVENS POINT, coached by Ann Ninnemann, 4th season

Overall: 5-2-0 NCHA: 0-0-0 Home: 2-1-0 Road: 3-1-0 Neutral: 0-0-0 OT: 0-1-0
 Oct: 1-1-0 Nov: 4-1-0 Dec: 0-0-0 Jan: 0-0-0 Feb: 0-0-0 Mar: 0-0-0
 vs. MIAC: 5-2-0 1-goal: 2-1 Before holiday break: 5-2-0 After break: 0-0-0

Last week: Won 3-2 vs. St. Olaf Lost 4-3 OT vs. St. Olaf
 G: Edward, Greenen, Marvin G: Novak, Carothers (2)

Current Streak: Lost 1 Last 4 games: 3-1-0 Last 8 games:

Upcoming Games: Fri-Sat vs. CUW

When scoring first: 3-1-0 When out shooting opp: 4-2-0 When being out shot: 1-0-0
 When leading after two: 4-0-0 When trailing after two: 0-1-0 When tied after two: 1-1-0
 When scoring 3+ goals: 3-1-0 Opp scores 2 or less: 4-0-0 vs. ranked opponents: 1-1-0

* Five-straight wins Oct 31 - Nov 13

* Pointers lose the 08-09 NCHA player of the year Nicole Grossmann, but return All-NCHA selection Dana Carothers ... 9 multi-point games, 1 hat trick for Carothers in 08-09

* Ended 08-09 season with loss to River Falls in playoff championship game, playing 3rd game in 3 days

* 09-10 Schedule Analysis: Nov 6 – Dec 5, nine game stretch with only one opponent who finished with record above .500 last year (Bethel)

* Lost 2-straight games only once (UWRF, UWS) and was never swept in 08-09

For more info, visit <http://athletics.uwsp.edu/index.asp?path=whockey&tab=womenssports>

GAME-BY-GAME

N 14 vs. St. Olaf: Dana Carothers tied it with the goalie pulled at 18:33 of the 3rd, but St. Olaf won in OT 4-3
 N 13 vs. St. Olaf: Erin Marvin broke a 2-2 tie at 11:53 of the 3rd to send UWSP to the home win
 N 8 vs. CC-M'head: Samantha Scheving broke a 1-1 tie and Staci Pomeroy made 27 saves in a 2-1 UWSP win
 N 7 at Bethel: The Pointers trailed 2-1 in the 2nd but responded with 3 goals - 2 by Michelle Lunneborg - to win
 N 6 at Augsburg: Tracy Butler and Michelle Lunneborg scored for UWSP in a 2-0 victory
 O 31 at St. Thomas: Five different Pointers scored, including Jessica Edward with the GWG, as UWSP won 5-3
 O 30 at St. Thomas: Sarah Phillips tallied the lone Pointer goal in a 3-1 loss at #8 St. Thomas

**UW-Stevens Point 2009-10
 (5-2-0, 0-0-0)**

Oct 30	at #8 St. Thomas	L, 1-3
Oct 31	at #8 St. Thomas	W, 5-3
Nov 6	at Augsburg	W, 2-0
Nov 7	at Bethel	W, 4-2
Nov 8	vs. CC-M'head	W, 2-1
Nov 13	vs. St. Olaf	W, 3-2
Nov 14	vs. St. Olaf	L, 3-4ot
Nov 20	vs. CUW	7:00p
Nov 21	vs. CUW	2:30p
Dec 5	at LFC	2:00p
Dec 6	at LFC	2:00p
Jan 9	vs. Gustavus	3:00p
Jan 15	vs. MARIAN	7:00p
Jan 16	vs. MARIAN	2:30p
Jan 22	at UWS	7:00p
Jan 23	at UWS	2:00p
Jan 29	vs. UWRF	7:00p
Jan 30	vs. UWRF	2:30p
Feb 5	at UWEC	7:00p
Feb 6	at UWEC	7:00p
Feb 9	at Gustavus	7:00p
Feb 13	vs. ADRIAN	7:00p
Feb 14	vs. ADRIAN	2:30p
Feb 19	at FIN	7:15p
Feb 20	at FIN	2:00p

All times local
 Ann Ninnemann (62-18-11)

UWSP in the Rankings

Nov 2 NR
 Nov 9 10
 Nov 16 NR

UNIVERSITY OF WISCONSIN – SUPERIOR, coached by Dan Laughlin, 7th season

Overall: 1-2-1	NCHA: 0-1-1	Home: 0-1-1	Road: 1-1-0	Neutral: 0-0-0	OT: 0-0-1
Oct: 0-0-0	Nov: 1-2-1	Dec: 0-0-0	Jan: 0-0-0	Feb: 0-0-0	Mar: 0-0-0
vs. MIAC: 1-1-0	1-goal: 1-2	Before holiday break: 1-2-1	After break: 0-0-0		

Last week:	Won 3-2 at Concordia-M'head	Lost 2-1 at Concordia-M'head
	G: Kent, Tyra, Katz	G: Kent

Current Streak: Lost 1 Last 4 games: 1-2-1 Last 8 games:

Upcoming Games: Fri-Sat at 5 UWRF

When scoring first:	1-2-0	When out shooting opp:	0-2-1	When being out shot:	1-0-0
When leading after two:	1-0-1	When trailing after two:	0-1-0	When tied after two:	0-1-0
When scoring 3+ goals:	1-0-0	Opp scores 2 or less:	1-2-1	vs. ranked opponents:	0-0-0

* Top 3 scorers from 08-09 all return, including All-NCHA selection Jodi Holland ... Holland also led the NCHA in goals last year

* Battling in January: Yellowjackets January schedule features 3 of 4 opponents who finished with combined 08-09 win percentage of .759, all of which were ranked at some point last season.

* Jasmine Pollack: 7 multi-point games in 08-09

* 3 unanswered goals in 3-1 win at #7 RF Jan 10, 2009

* 3 unanswered goals Oct 28, 2008 vs. FIN (Allie Pullar, Emily Brown, Jodi Holland)

For more info, visit <http://www.uwsuper.edu/athletics/womens/hockey/index.cfm>

UW-Superior 2009-10
(1-2-1, 0-1-1)

Nov 6	vs. LFC	L, 1-2
Nov 7	vs. LFC	T, 2-2ot
Nov 13	at CC-M'head	W, 3-2
Nov 14	at CC-M'head	L, 1-2
Nov 17	vs. Gustavus	7:00p
Nov 20	at 5 UWRF	2:05p
Nov 21	at 5 UWRF	2:05p
Nov 24	vs. Bethel	7:00p
Dec 8	at St. Thomas	7:00p
Dec 11	at CUW	7:00p
Dec 12	at CUW	2:00p
Jan 15	vs. St. Benedict	4:00p
Jan 16	vs. St. Benedict	2:00p
Jan 22	vs. UWSP	7:00p
Jan 23	vs. UWSP	2:00p
Jan 26	at Gustavus	7:00p
Jan 29	vs. ADRIAN	7:00p
Jan 30	vs. ADRIAN	1:00p
Feb 5	at FIN	7:00p
Feb 6	at FIN	2:00p
Feb 9	vs. St. Thomas	7:00p
Feb 12	at MARIAN	8:00p
Feb 13	at MARIAN	12:00p
Feb 19	vs. UWEC	7:00p
Feb 20	vs. UWEC	2:00p
All times local		
Dan Laughlin (115-41-12)		

GAME-BY-GAME

N 14	at Concordia-M'head: CC broke a 1-1 tie at 15:24 of the 3rd; Melissa Kunzelman made 36 saves in the 2-1 loss
N 13	at Concordia-M'head: Melissa Kunzelman made 38 saves in leading UWS past CC 3-2 on the road
N 7	vs. LFC: UWS carried a 2-1 lead into the 3rd, but Kim Herring tied it for LFC and the teams finished in a tie
N 6	vs. LFC: Jodi Holland opened the scoring for UWS, but LFC prevailed 2-1 in the opener

UWS in the Rankings

Nov 2	10
Nov 9	NR
Nov 16	NR